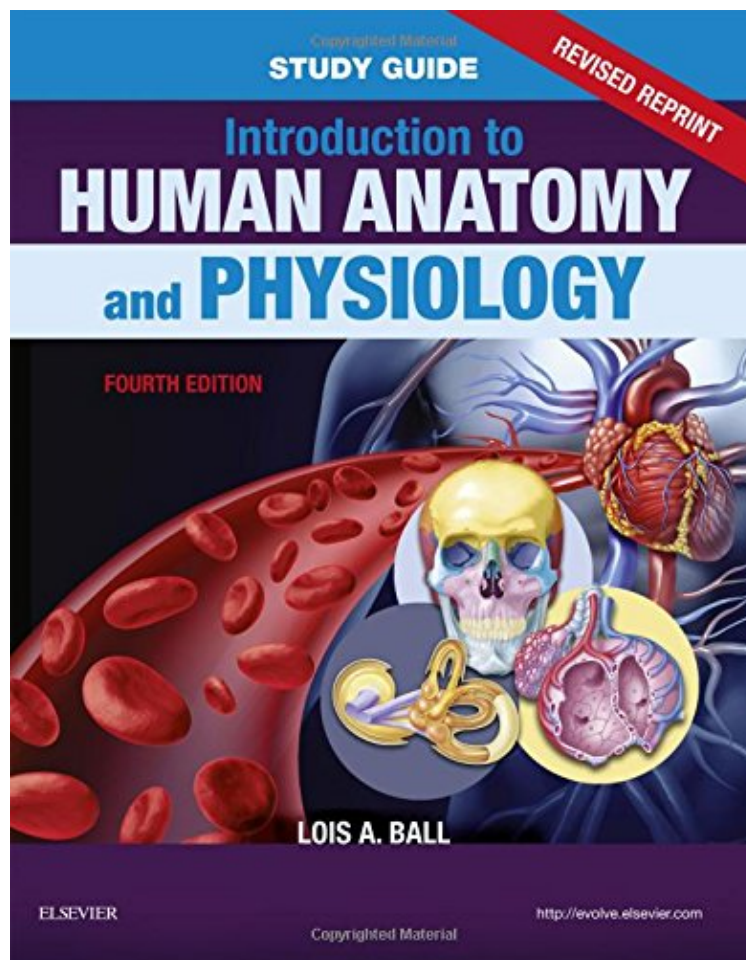


(Download pdf ebook) Study Guide for Introduction to Human Anatomy and Physiology - Revised Reprints, 4e

Study Guide for Introduction to Human Anatomy and Physiology - Revised Reprints, 4e

Lois A Ball

**Download PDF | ePub | DOC | audiobook | ebooks*



#1455223 in Books 2016-12-22Original language:English 10.75 x 8.50 x .751, #File Name: 0323531237176 pages | File size: 78.Mb

Lois A Ball : Study Guide for Introduction to Human Anatomy and Physiology - Revised Reprints, 4e before purchasing it in order to gage whether or not it would be worth my time, and all praised Study Guide for Introduction to Human Anatomy and Physiology - Revised Reprints, 4e:

Master content from the textbook with this helpful study tool! Designed to accompany Solomons Introduction to Human Anatomy and Physiology 3rd Edition, this workbook will assist students in understanding and applying material from each chapter in the text.Labeling exercises, consisting of art from the textbook, reinforce understanding

of where the structures of the body are located. Multiple choice end-of-chapter tests immediately let you know if you have mastered the content of that chapter, and better prepare you for multiple choice quizzes and exams in class. Chapter outlines and learning objectives from the textbook highlight essential content and the objectives you should master before beginning the exercises. Crossword puzzle activities encourage the use of new vocabulary words and emphasize the proper spelling of terms. Fill-in-the-blank exercises help you master and retain information in a fun and engaging way. Answers to exercises on Evolve so you can use this Study Guide to test your knowledge. NEW! All-new matching exercises and jumble games, mixed with traditional fill-in-the-blank questions, create more variety and give you more options for study. NEW! Updated content and art reflects changes made to the new edition of the text and provides you with the tools you need to learn and master the concepts presented in the text.